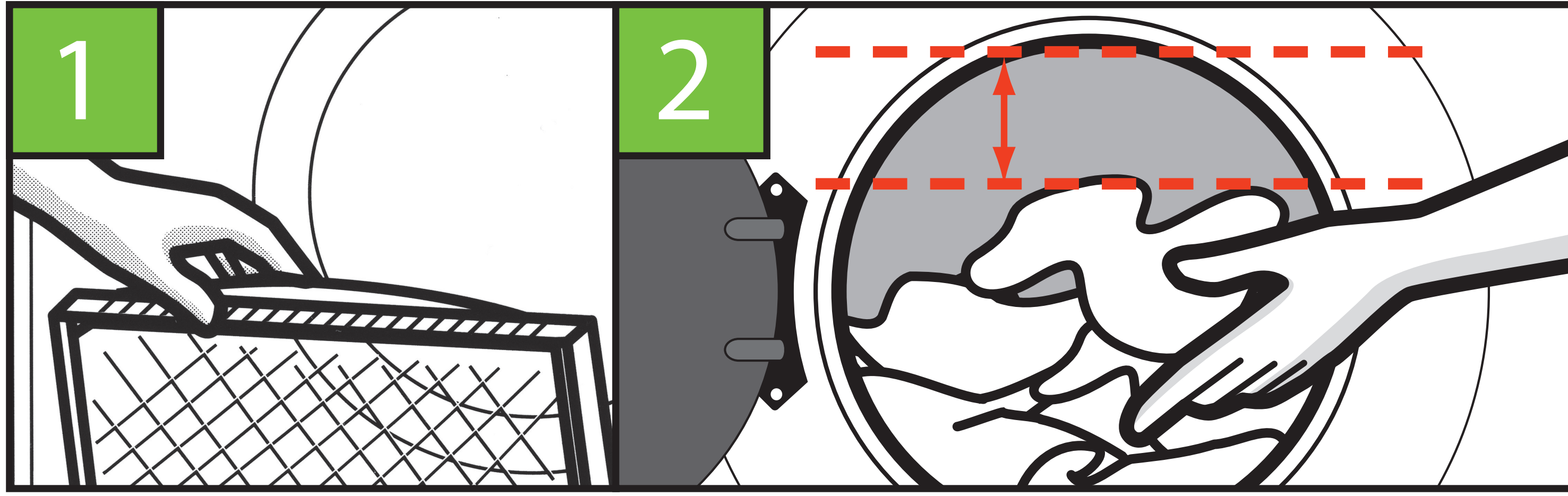


EASY WASHING AND DRYING

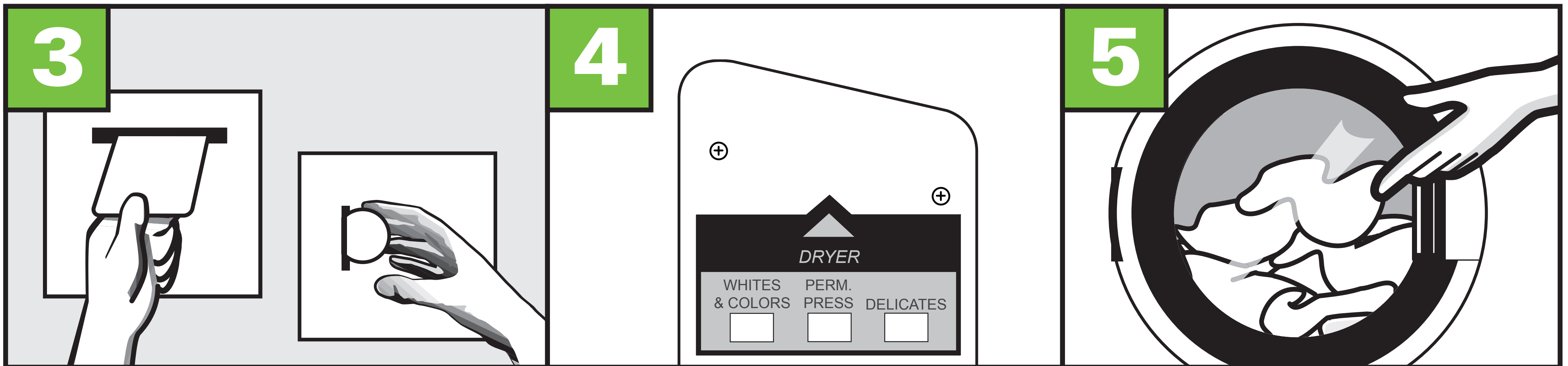
STACK WASHER/DRYER

DRYER INSTRUCTIONS



CLEAN lint filter.

LOAD dryer and close door securely.
Leave space at top to allow airflow.

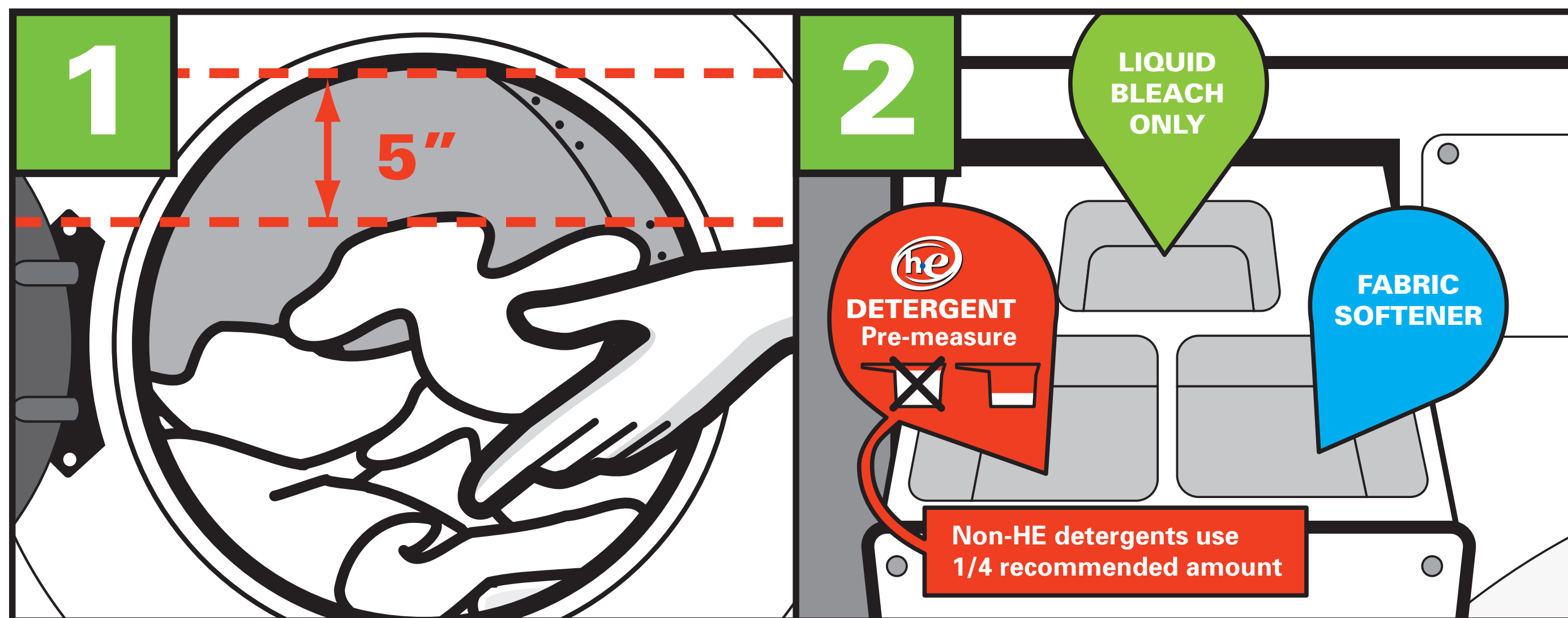


INSERT card or coins.

SELECT cycle to start drying.

RESTART by closing door and reselecting cycle.

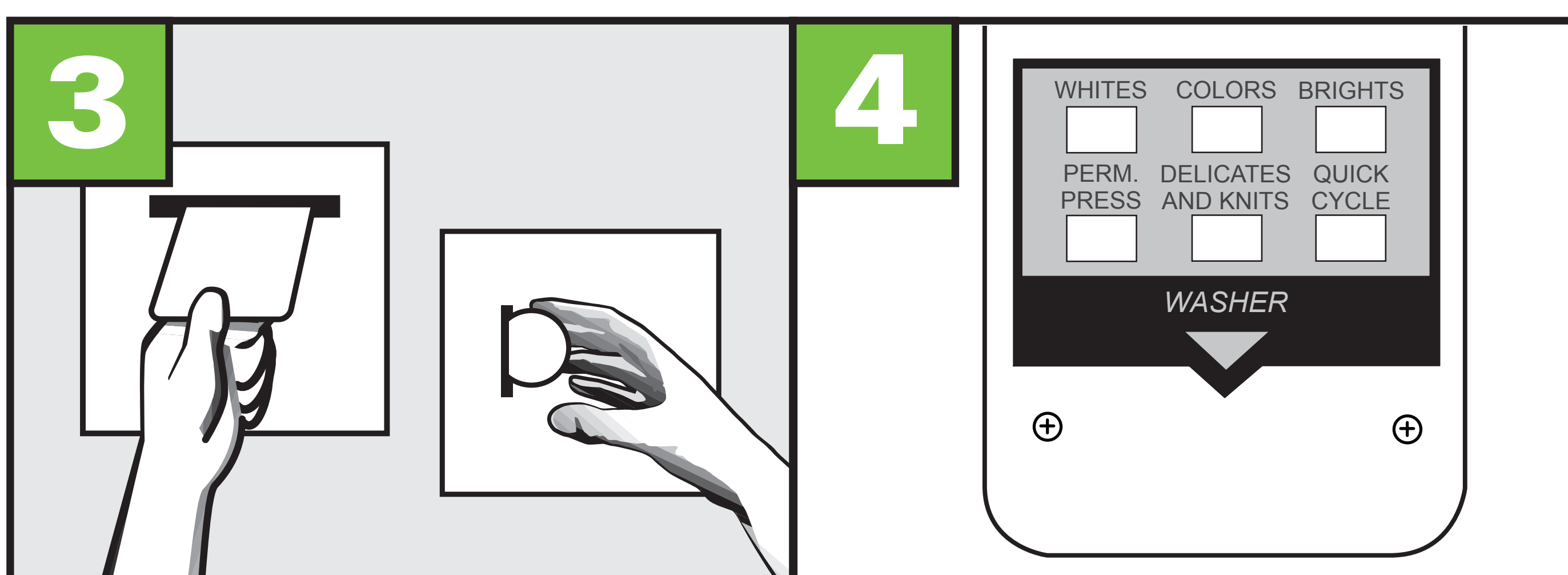
WASHER INSTRUCTIONS



LOAD washer.
Do not overload. Close door firmly.

ADD recommended amounts of HE detergent, bleach and fabric softener. Do not open dispenser drawer when machine is in use.

!
Too much detergent leaves residue in clothing and causes poor washing performance.



INSERT card or coins.

SELECT cycle.
Door will lock. Do not open.

FOR YOUR SAFETY

- Never launder items containing cooking oil, foam rubber, flammable materials or fumes.
- Never reach into the dryers while they are operating.
- Never allow children to play on or around the Stack Washer/Dryer.



SEBCO | LAUNDRY SYSTEMS™