

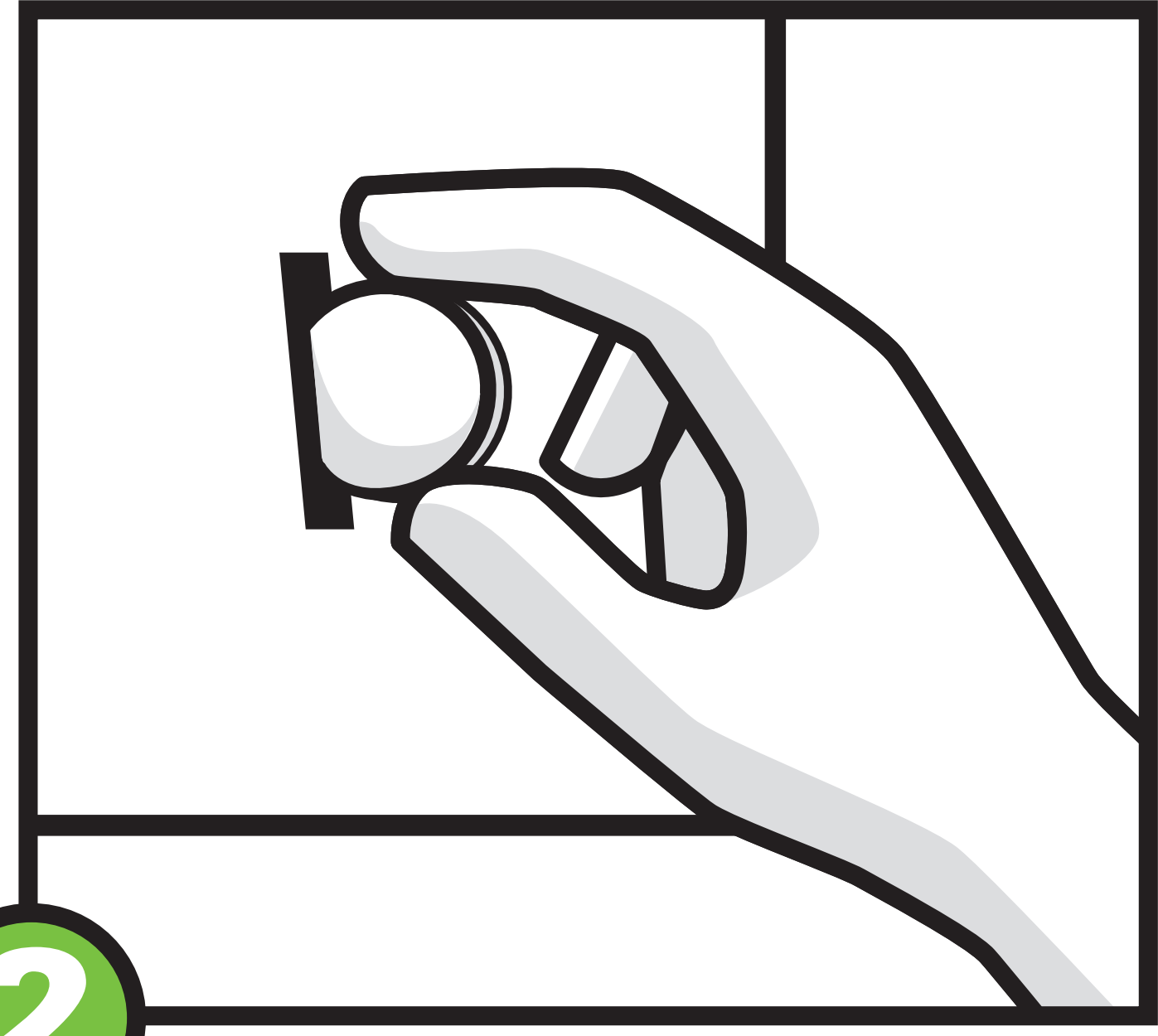
# SIMPLE DRYING

## MULTI-LOAD DRYERS



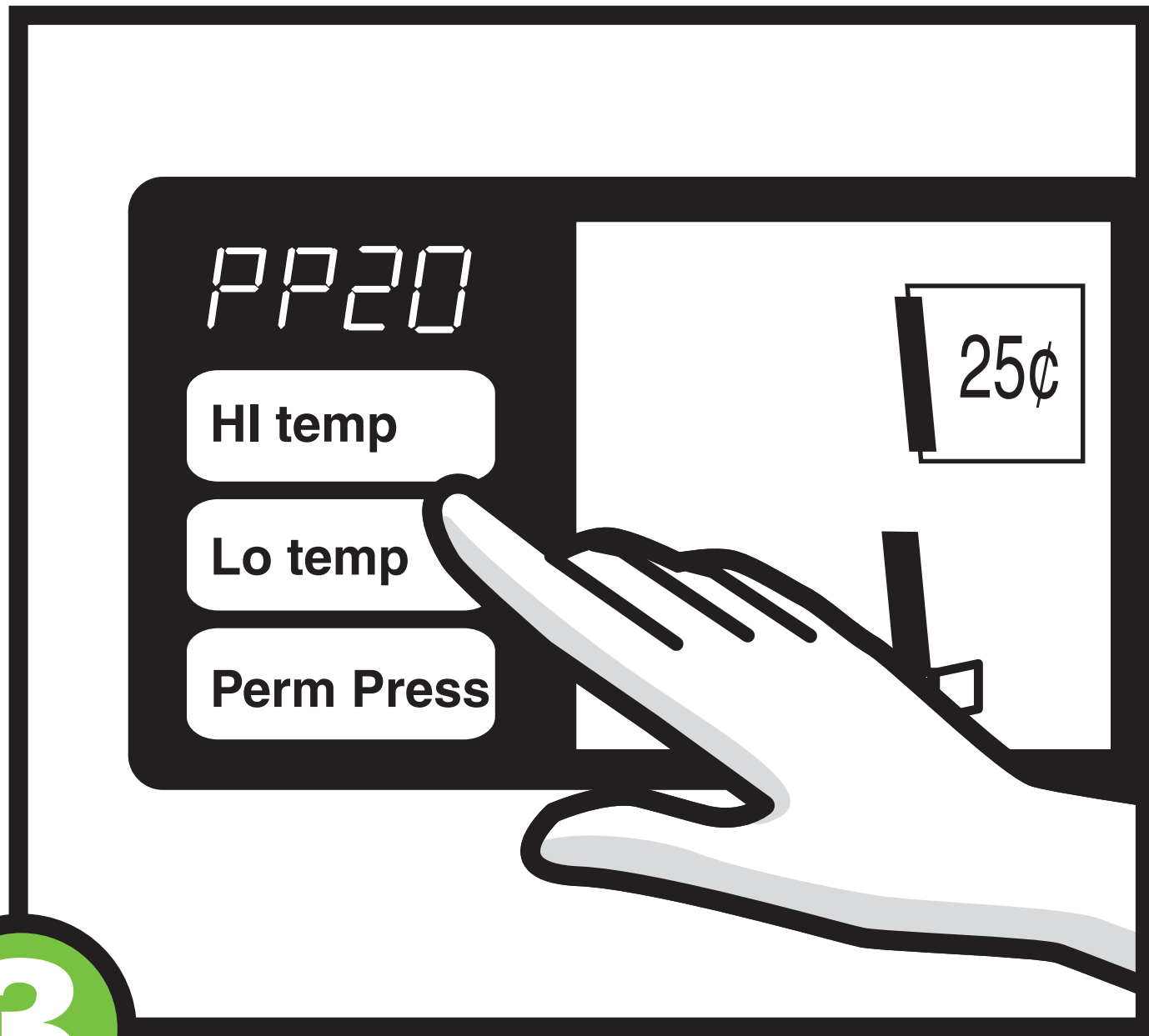
1

**LOAD** dryer and close door securely.



2

**INSERT** appropriate number of coins.



3

**SELECT** temperature setting to start dryer.



4

**RESTART** by closing door and reselecting temperature.

### FOR YOUR SAFETY

- Never launder items containing cooking oil, foam rubber, flammable materials or fumes.
- Never reach into the dryers while they are operating.
- Never allow children to play on or around the dryers.



**SEBCO**

LAUNDRY  
SYSTEMS™

ML110013B 3/11