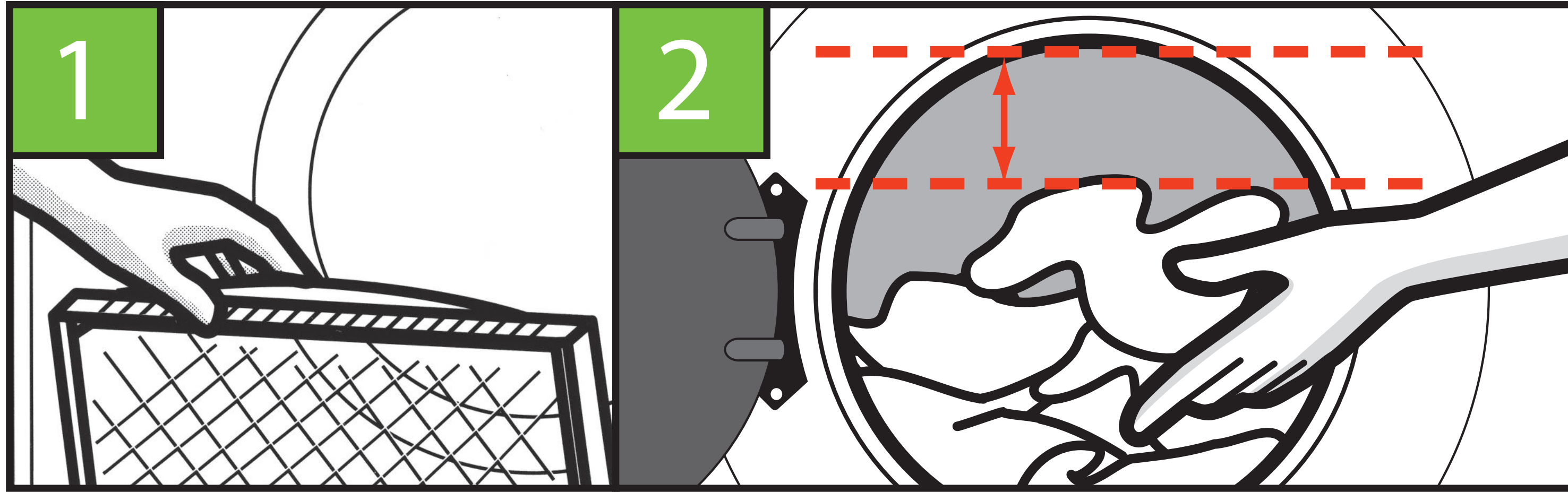


# EASY WASHING AND DRYING

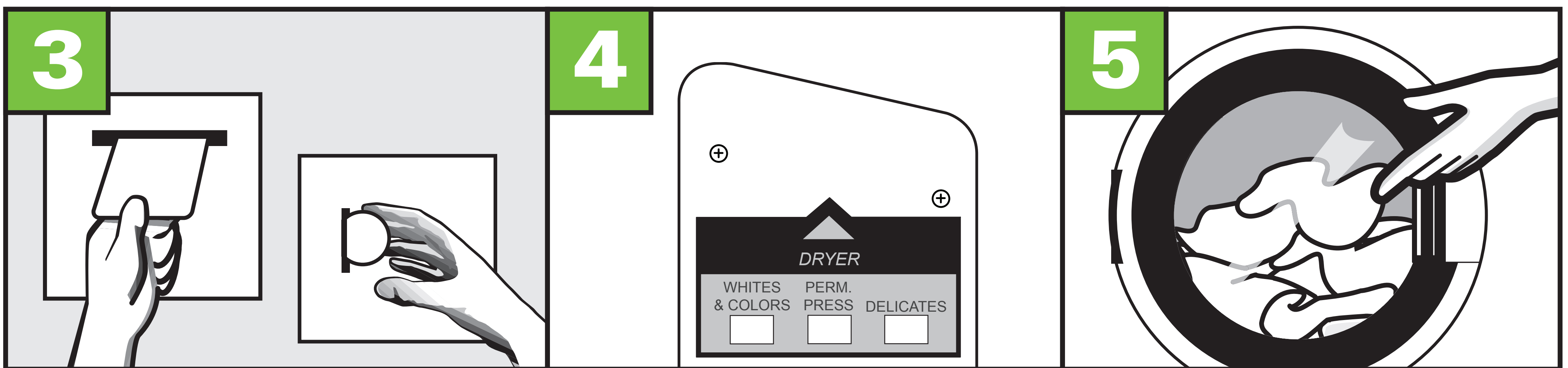
## STACK WASHER/DRYER

### DRYER INSTRUCTIONS



**CLEAN** lint filter.

**LOAD** dryer and close door securely.  
Leave space at top to allow airflow.

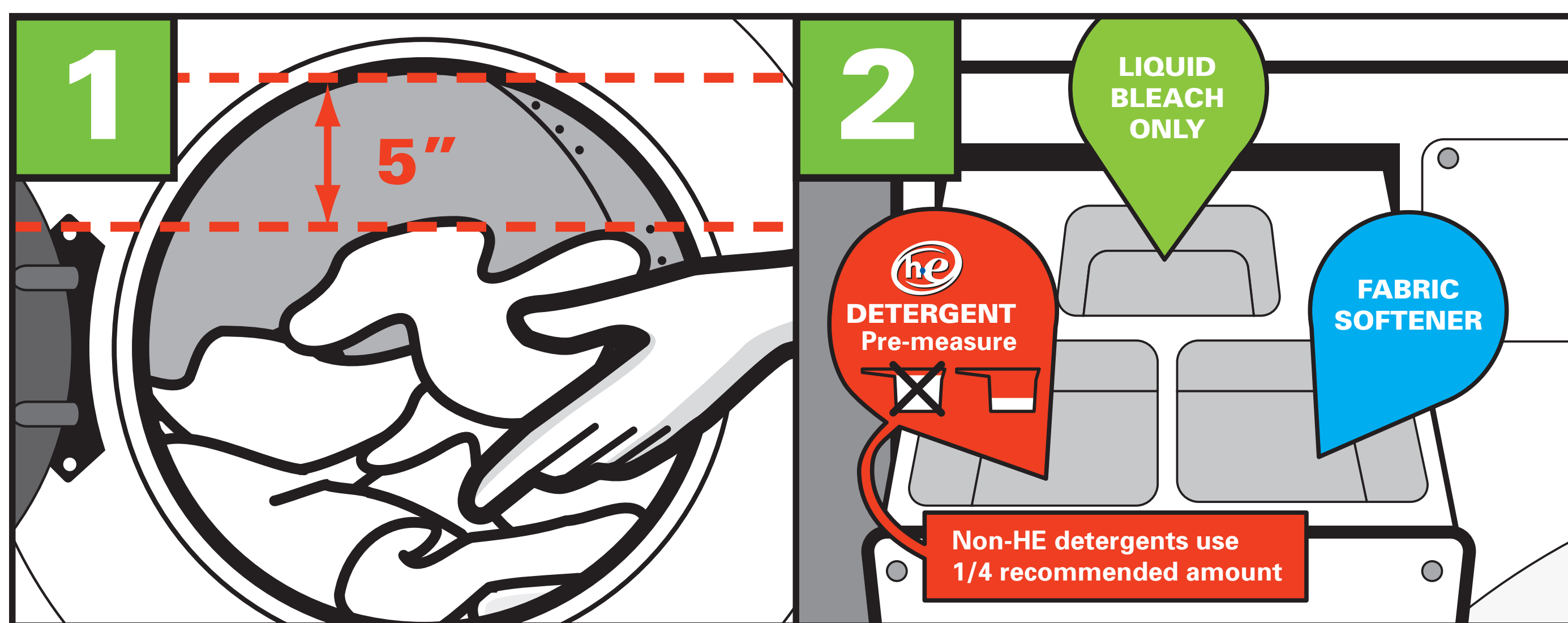


**INSERT** card or coins.

**SELECT** cycle to start drying.

**RESTART** by closing door and reselecting cycle.

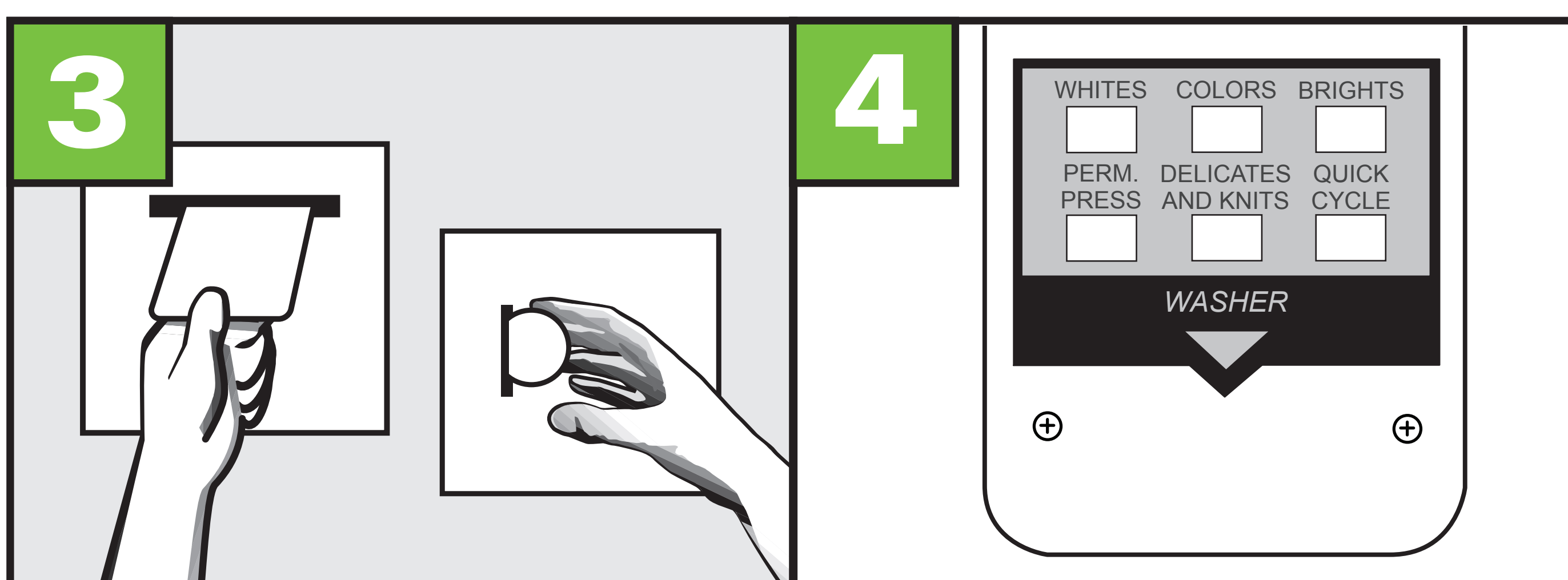
### WASHER INSTRUCTIONS



**LOAD** washer.  
Do not overload. Close door firmly.

**ADD** recommended amounts of HE detergent, bleach and fabric softener. Do not open dispenser drawer when machine is in use.

**!**  
*Too much detergent leaves residue in clothing and causes poor washing performance.*



**INSERT** card or coins.

**SELECT** cycle.  
Door will lock. Do not open.

### FOR YOUR SAFETY

- Never launder items containing cooking oil, foam rubber, flammable materials or fumes.
- Never reach into the dryers while they are operating.
- Never allow children to play on or around the Stack Washer/Dryer.



**SEBCO** | LAUNDRY SYSTEMS™