

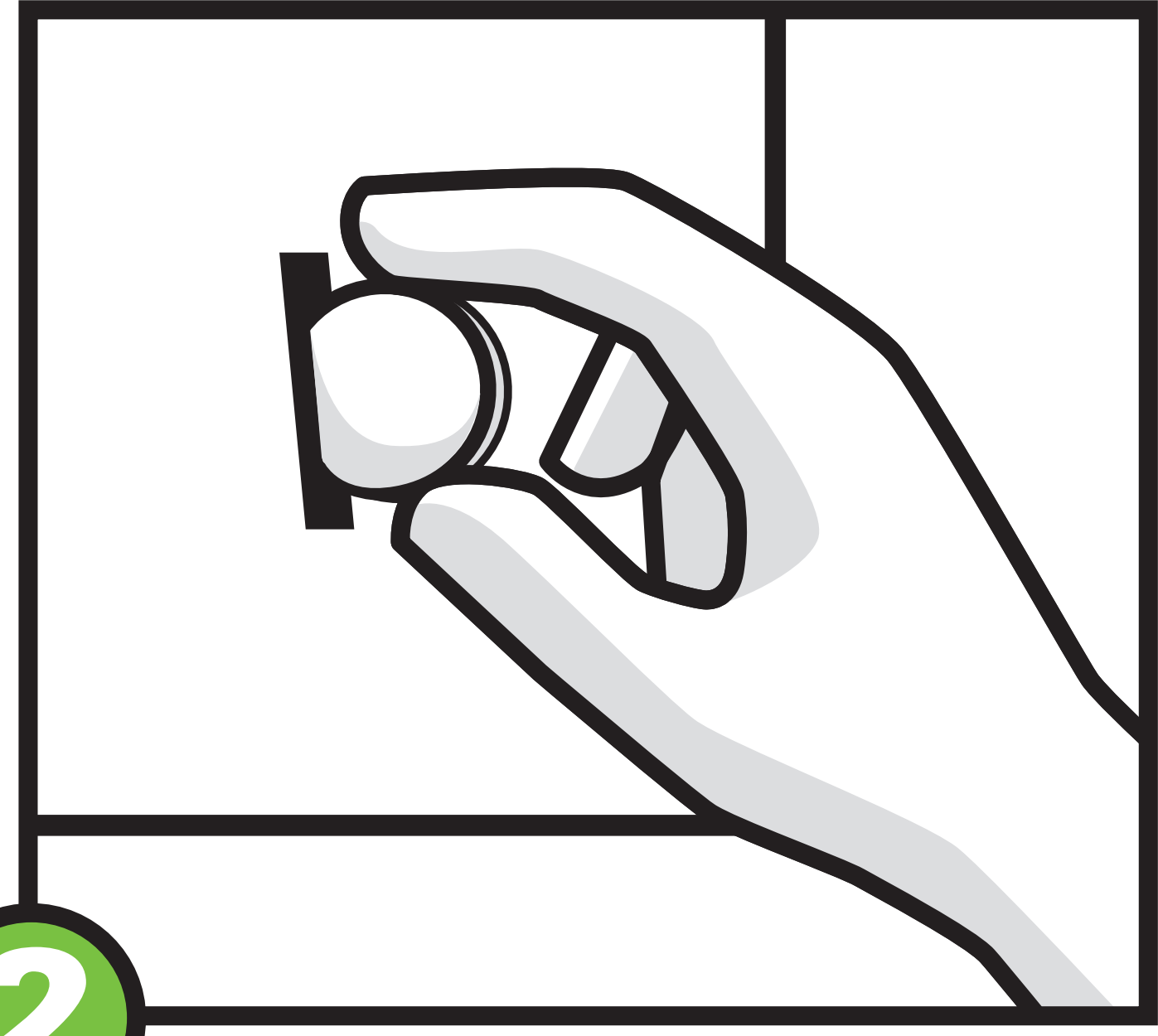
SIMPLE DRYING

MULTI-LOAD DRYERS



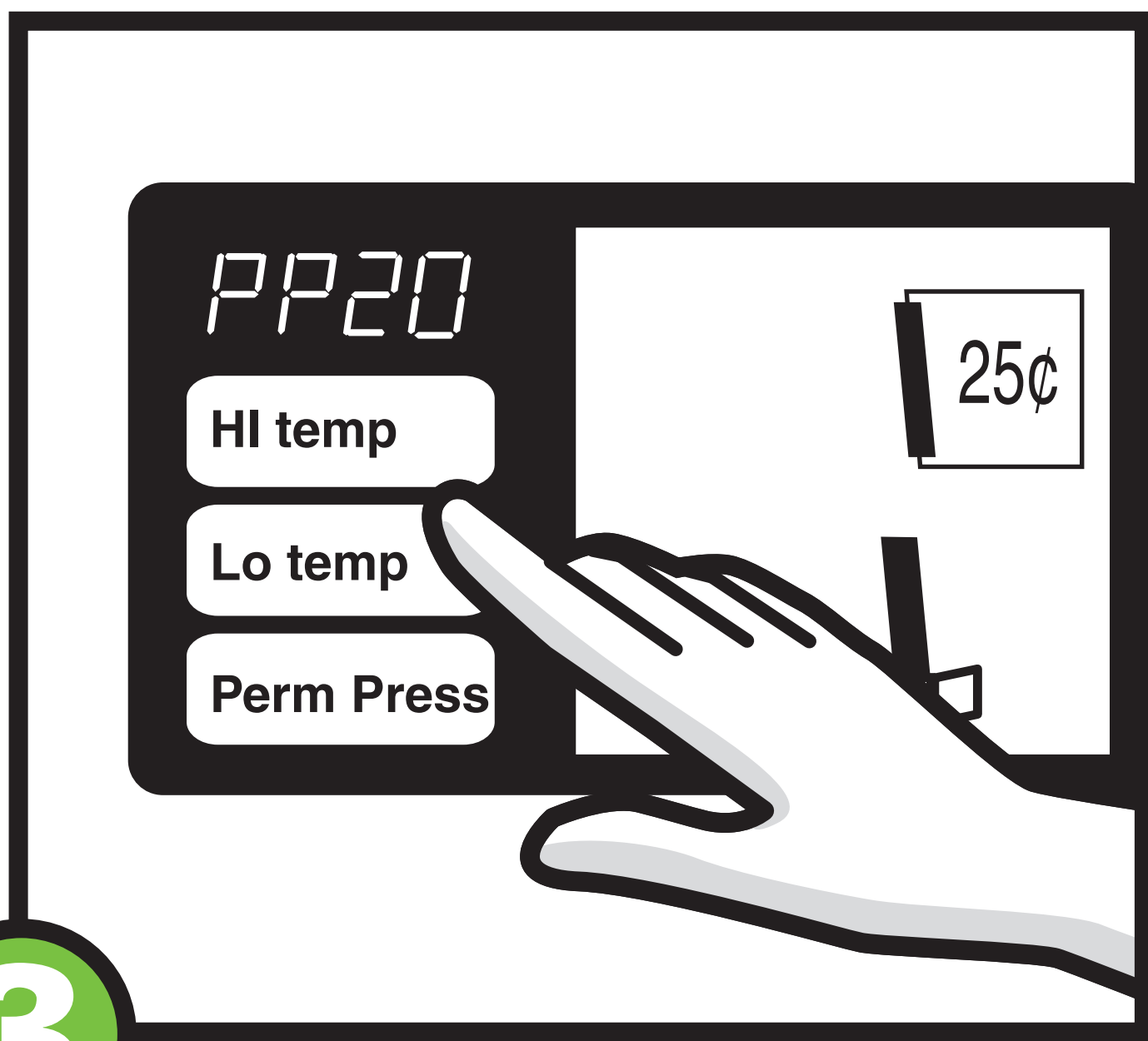
1

LOAD dryer and close door securely.



2

INSERT appropriate number of coins.



3

SELECT temperature setting to start dryer.



4

RESTART by closing door and reselecting temperature.

FOR YOUR SAFETY

- Never launder items containing cooking oil, foam rubber, flammable materials or fumes.
- Never reach into the dryers while they are operating.
- Never allow children to play on or around the dryers.



SEBCO

LAUNDRY
SYSTEMS™

ML110013B 3/11